

EQUA. LIBERA. INCLUSIVA.

BOLOGNA METROPOLITANA
PIANO PER L'UGUAGLIANZA

LA GRANDE DISUGUAGLIANZA

*Nuovi modi di pensare l'organizzazione e lo sviluppo delle città in
ottica di genere*

Zaida Muxí Martínez,

Professoressa ETSAB – UPC e Distinguished Professor EAAD TEC Monterrey

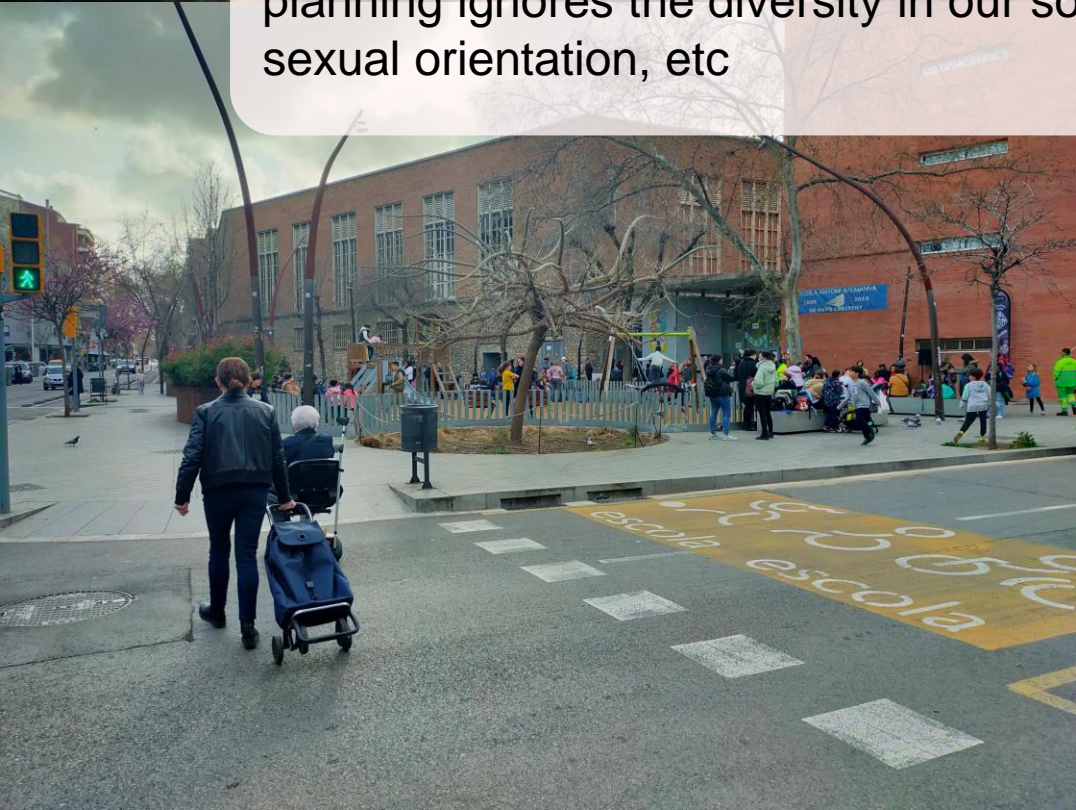


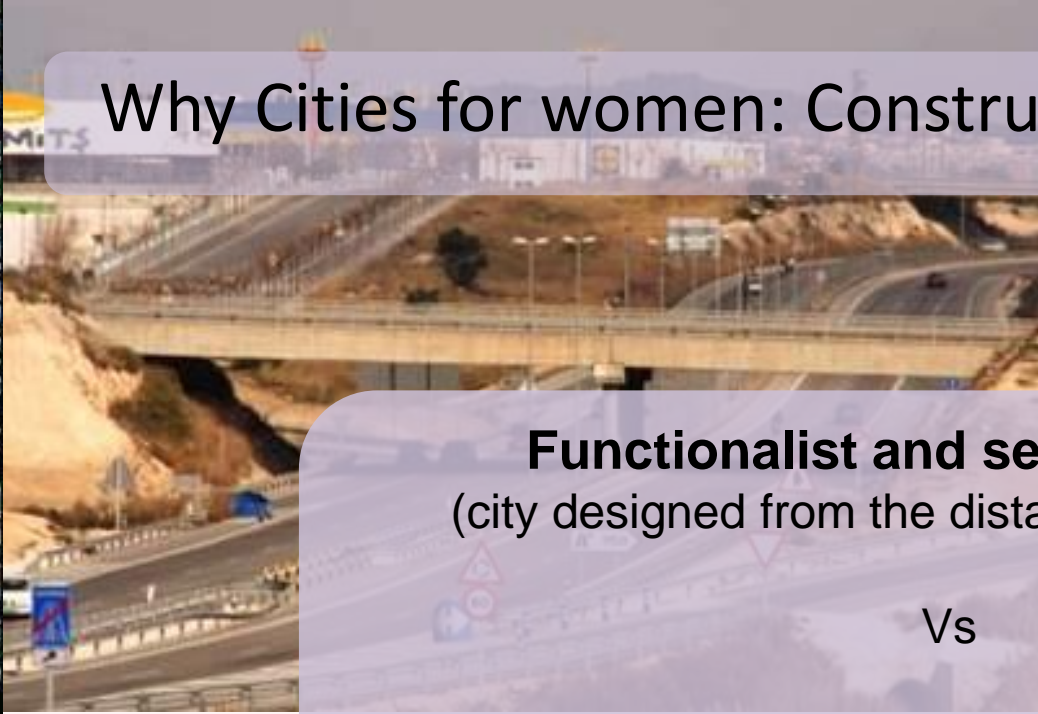
con il Patrocinio di



Why Cities for women: Constructing Gender

Urban planning is not neutral Neutral and universal planning does not exist. The false neutrality in planning ignores the diversity in our society related with gender, origin, social class, ethnicity, religion, sexual orientation, etc



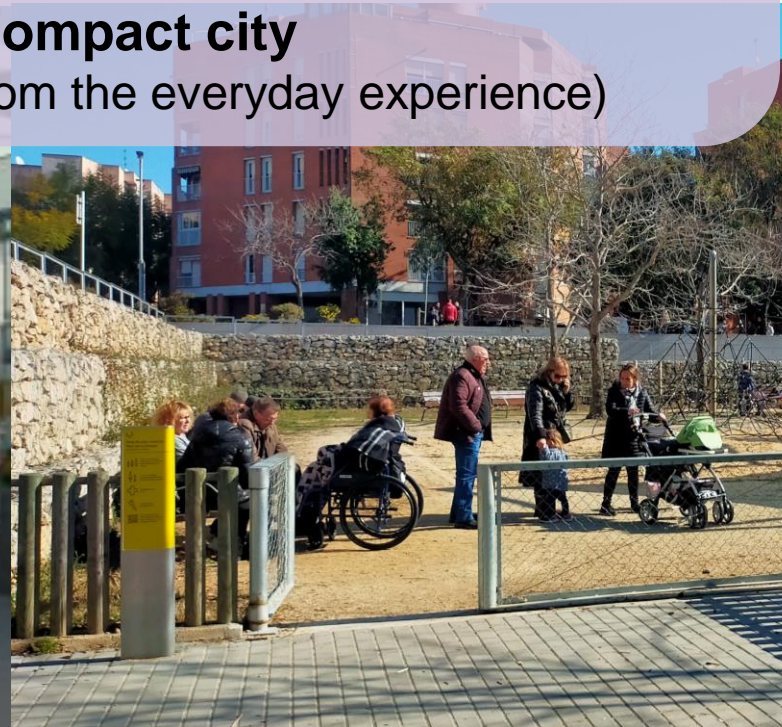


Why Cities for women: Constructing Gender

Functionalist and segregated city
(city designed from the distance and the maps)

Vs

Compact city
(city designed from the everyday experience)





For whom are the cities?

The public space project demonstrates the inclusion or exclusion

Urban Structure



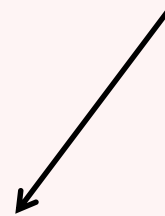
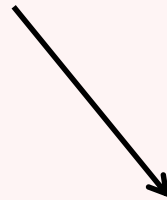
Proximity



Mobility Conditions



**Pedestrian priority +
Public Transportation**



Quality of Everyday Life

Who decides about the structure?



„Those in the shadow are not seen“

Gender sensitiv urban design is a quality assessment of planning decisions and processes in regard to equal opportunities of different user groups

Gender+: social roles, life phases, cultural and social backgrounds, specific needs

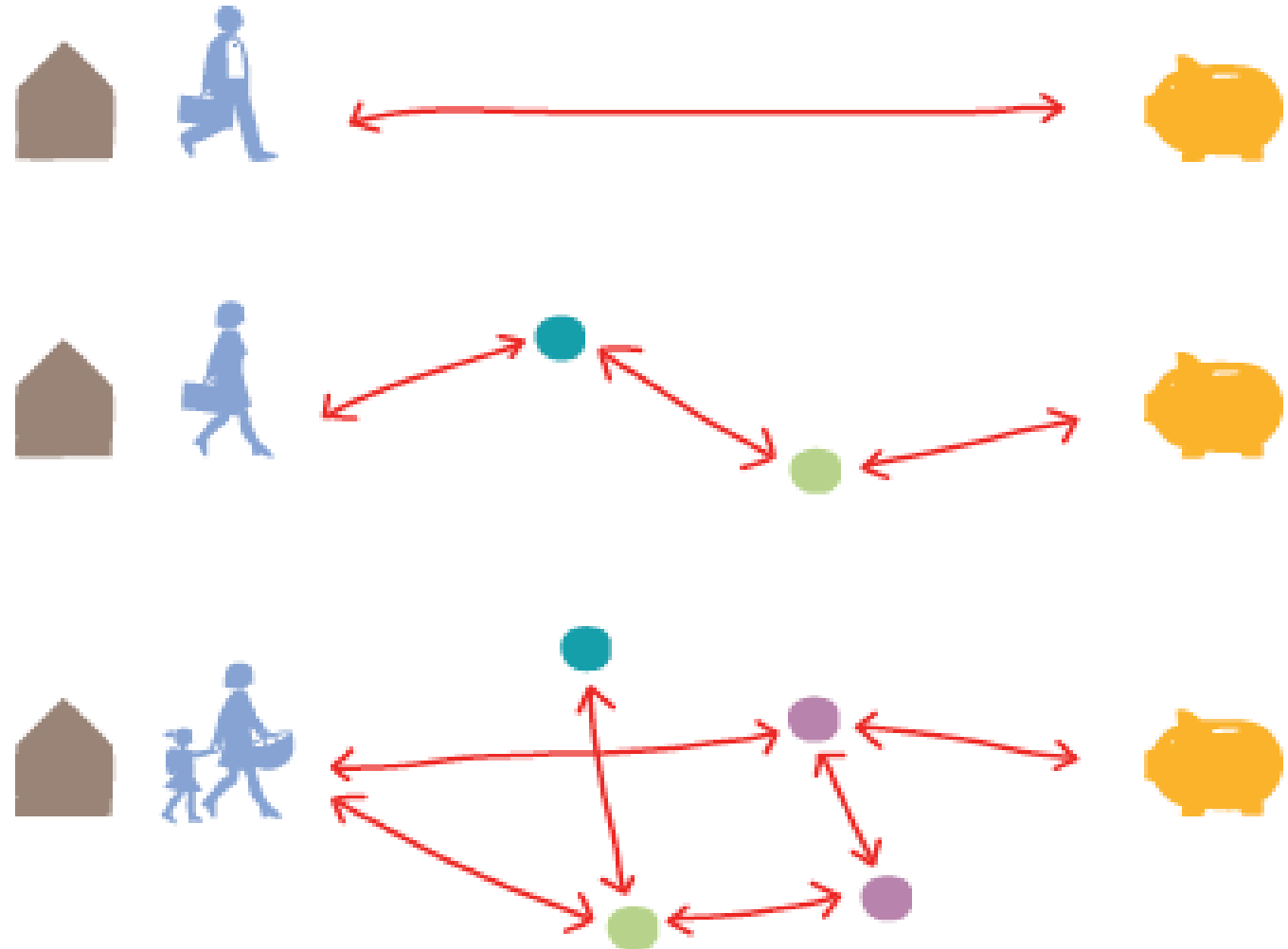
People in their role as unpaid or paid care givers take also into account the needs of children, youngsters and elderly and are important stakeholders for assessments

„To stand in different shoes“ - support for gender sensitive decision making

Activity patterns influenced by gender roles

- CHOREOGRAPHIES OF EVERYDAY LIFE:

The dance of the city (Jane Jacobs) and the importance of distance (Franziska Ullman)



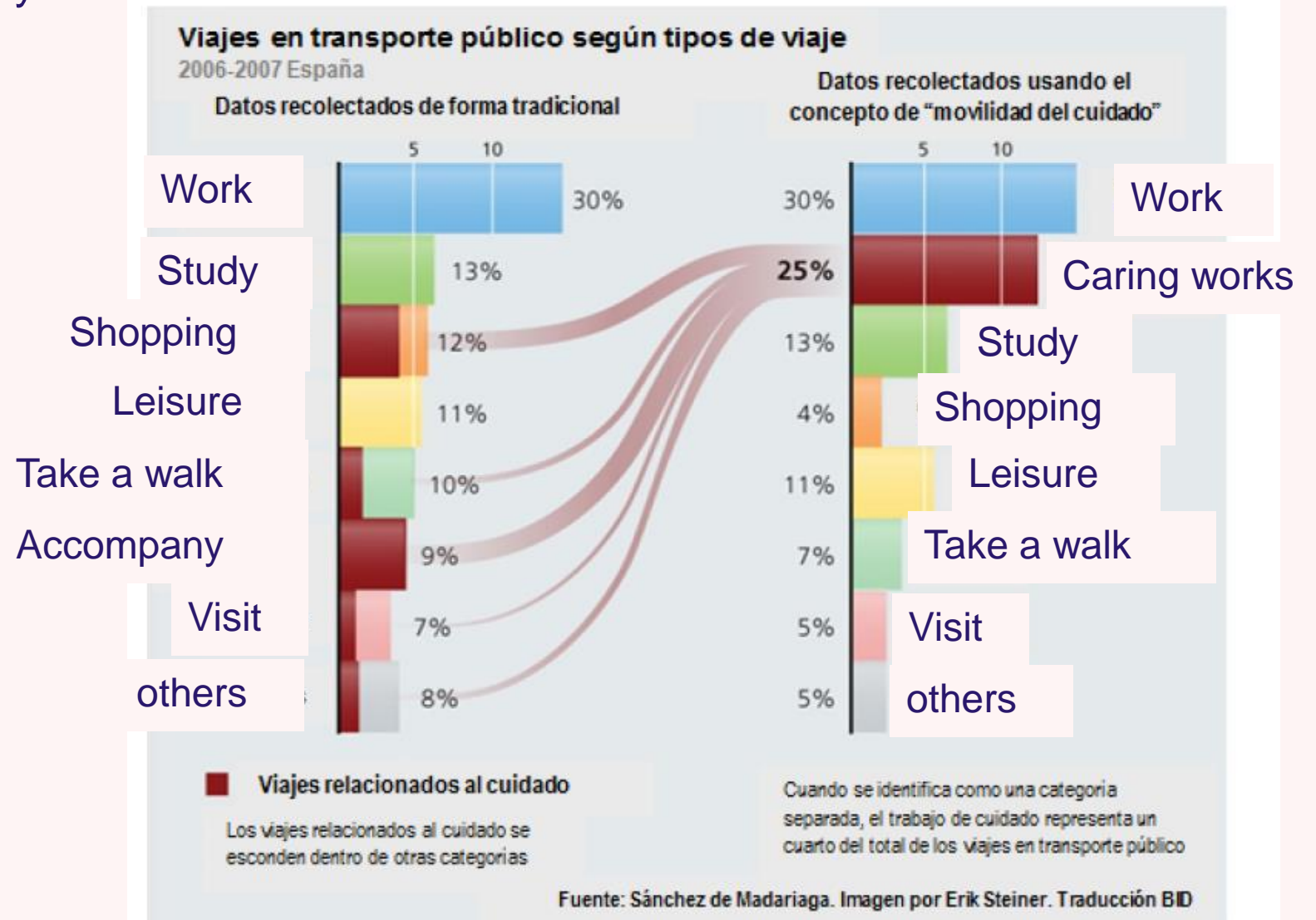
- Actividad propia
- Actividad de cuidado
- Compras
- Casa
- ↔ Calles que conectan lo anterior
- Trabajo remunerado

Changing the way we consider mobility

What are the needs of mobility?

Are there mandatory mobility and “secondary or not mandatory mobility”?

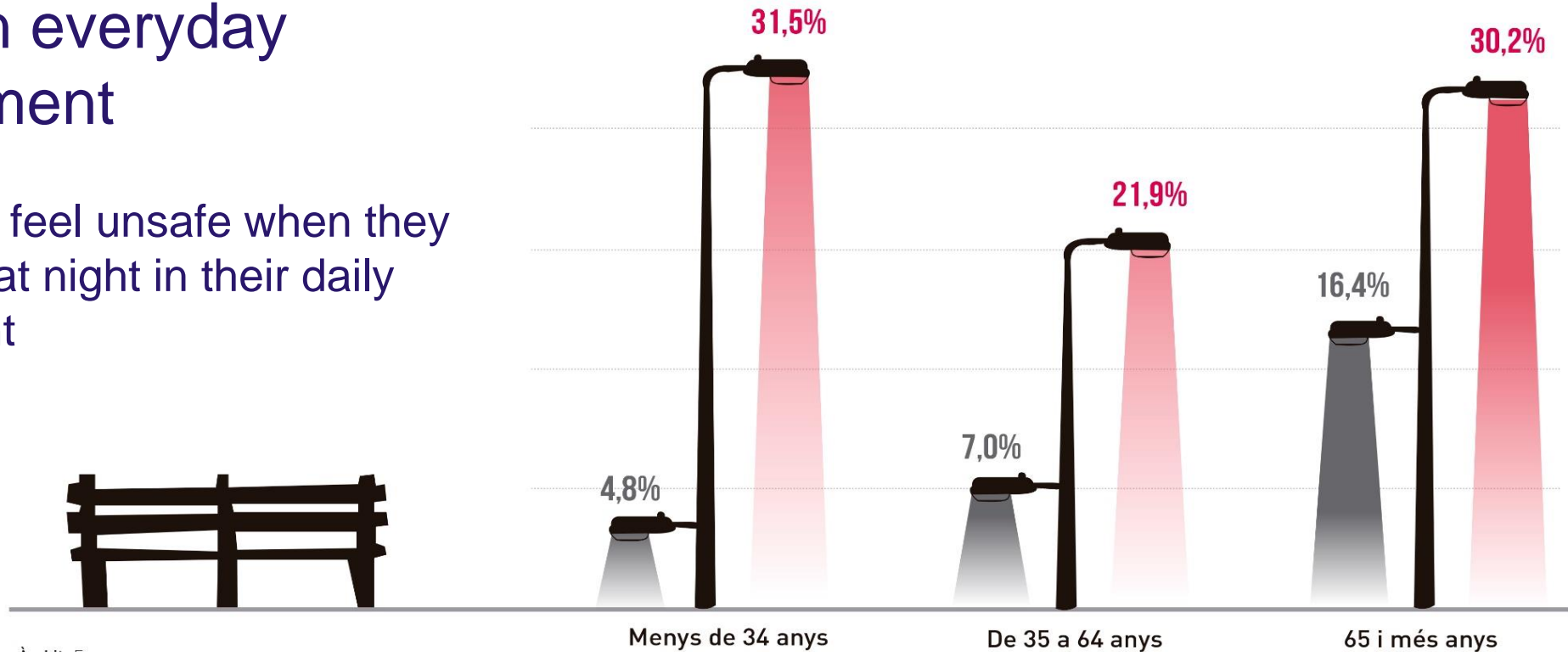
Do we all move equally?



Safety

Safety in everyday environment

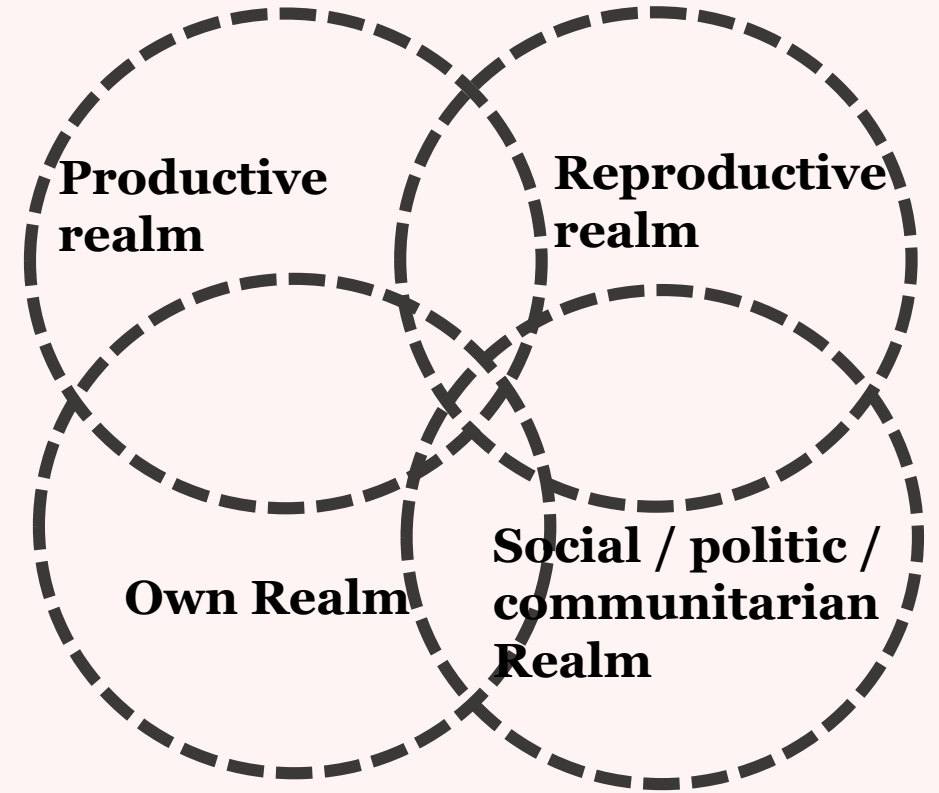
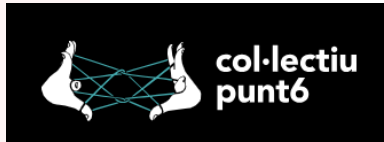
people who feel unsafe when they walk alone at night in their daily environment



Àmbit: Espanya
Font: Enquesta Social Europea, 2014
Disseny: www.aquatinta.es

www.iqobservatori.org

Everyday life



Everyday life = activities + space + time

The concept of daily life encompasses the development of all those activities we develop in our day to day or eventually

Everyday life can't be separated from a shared space and a finite time.

Principles of Feminist Urbanism –

aspires to a social transformation, eradicating inequalities and breaking gender stereotypes



Deeper analysis of reality

Priority to everyday life and people's diversity



Value reproductive and care tasks



Principles of Feminist Urbanism –

aspires to a social transformation, eradicating inequalities and breaking gender stereotypes



Acknowledging diversity of bodies and abilities

Interrelation of different aspects of life and spaces



Proximity as Urban Quality



Break social hierarchies and among disciplines



Gender & Proximity

Means talk about inclusive cities.

Recovering obliterating neighborhoods... more than ever we must look for the forgetting ones in terms of gender, age, class and opportunities... putting women's gender experiences at the front

Feminist city and with gender perspective

It isn't a formal result



It is a process

**It is a different regard / It makes visible the
invisible from the hegemonic discourse
(masculine-class-ethnocentric...)**



Grazie

zaidamuxim@gmail.com